

BOXER 7

AIR-OPERATED DOUBLE DIAPHRAGM PUMPS



- Product designed and constructed in Italy
- PATENTED stall-prevention pneumatic circuit
- Operates with NON-lubricated air
- SELF-PRIMING
- Supports dry running
- ATEX certification for ZONE 1 - ZONE 2
- IECEx certification
- Adjustable operating speed
- Versatile
- Suitable for pumping fluids with high viscosity and for demanding applications
- Usable with fluids containing suspended solids
- Option of suspended installation
- Suitable for continuous use

BOXER 7

AIR-OPERATED DOUBLE DIAPHRAGM PUMPS



Specifications and types



ATEX Zona 1 (CONDUCT): II2GExhIIIBT4Gb – II2DExhIIIBT135°CDBX
ATEX Zona 2 (STANDARD): II3GExhIIIBT4Gc – II3DExhIIIBT135°CDBX – IM2ExhIMbX *
IECEx: ExhIIIBT4Gb – ExhIIIBT135°CDB

* The string relating to mining applications is not applicable to aluminium BOXER range pumps

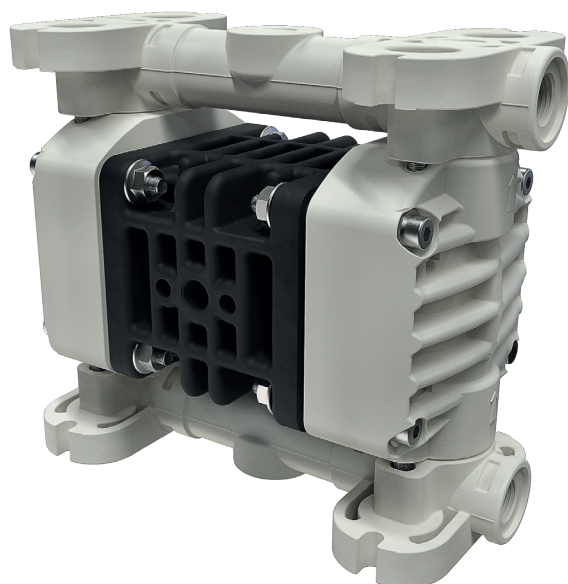


Suction / delivery connections	1/4" f BSPP(*)
Air fitting	1/8" f BSPP
Max flow rate*	9 l/min
Max supply air pressure	8 bar
Max head*	80 m
Max negative suction head - dry running**	4 m
Max negative suction head - pump primed	9,5 m
Max diameter suspended solids	0,5 mm
Noise level	65 dB
Volume per stroke	3,2 cc

(*) NPT fittings only on request

* The curves and performances refer to pumps with immersed suction and open delivery outlet with water at 20 °C and vary according to the composition materials.

** Value depends on pump configuration.



PP

Boxer 7



Maximum Dimensions

Height	120 mm
Width	137 mm
Depth	69 mm



Construction materials (body and manifolds) and net weight

Polypropylene (with glass filler)	0,7 Kg
	Temp. 3°C min. 65°C max
Conductive polypropylene (with carbon filler)	0,7 Kg
	Temp. 3°C min. 65°C max



PVDF

Boxer 7



Maximum Dimensions

Height	120 mm
Width	137 mm
Depth	70 mm



Construction materials (body and manifolds) and net weight

PVDF (with carbon filler)	0,7 Kg
	Temp. 3°C min. 95°C max

BOXER 7

AIR-OPERATED DOUBLE DIAPHRAGM PUMPS

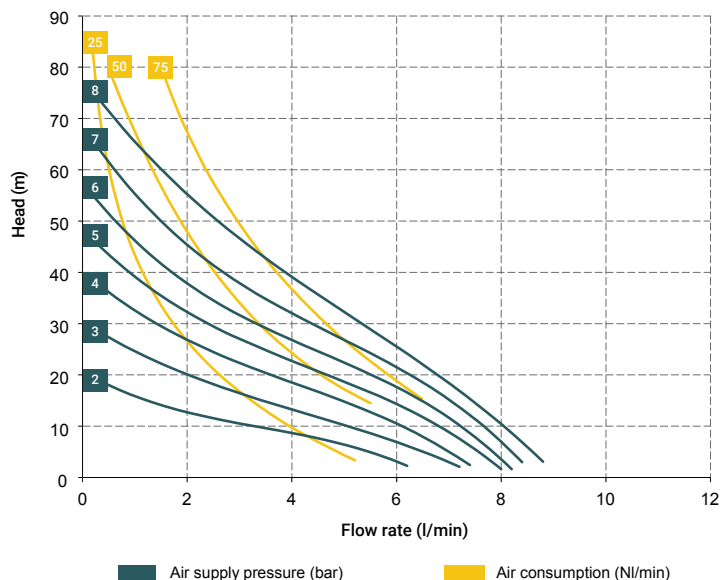


Specifications and types



ATEX Zona 1 (CONDUCT): II2GExhIIIBT4Gb – II2DExhIIIBT135°CDBX
ATEX Zona 2 (STANDARD): II3GExhIIIBT4Gc – II3DExhIIIBT135°CDBX – IM2ExhIMbX *
IECEx: ExhIIIBT4Gb – ExhIIIBT135°CDB

* The string relating to mining applications is not applicable to aluminium BOXER range pumps



* The curves and performances refer to pumps with immersed suction and open delivery outlet with water at 20 °C and vary according to the composition materials.

T10 distributor material (compressed air circuit):

- POM

Core material:

- Polypropylene (with glass filler)
- Conductive polypropylene (with carbon filler)

Diaphragm materials:

- PTFE
- NBR

Cap materials:

- Polypropylene (with glass filler)
- Conductive polypropylene (with carbon filler)
- PVDF

Ball materials:

- PTFE
- AISI 316 L
- EPDM

O-ring materials:

- EPDM
- NBR
- VITON®
- PTFE

Packaging:

cardboard box - 14 x 19 x 14 cm - weight 0.17 kg
(the weight refers only to the packaging without the pump inside)

Accessories:

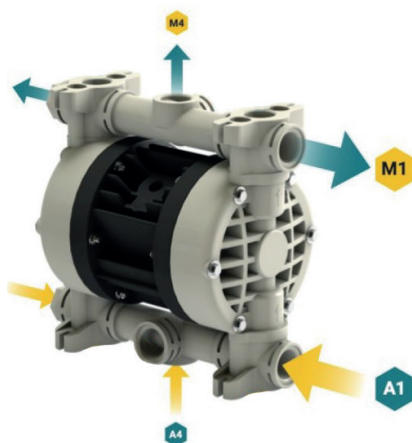
- Equaflux 51
(For damper materials, please refer to the technical data sheet)
- Air regulation kit W1000-8-G

BOXER 07 (PP):

A1 - A2 - A4 - M1 - M2- M4

BOXER 07 (PVDF):

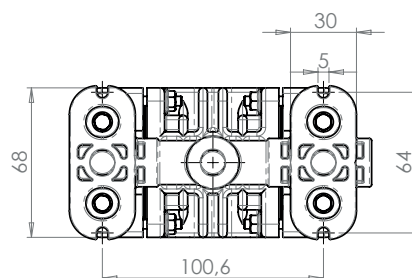
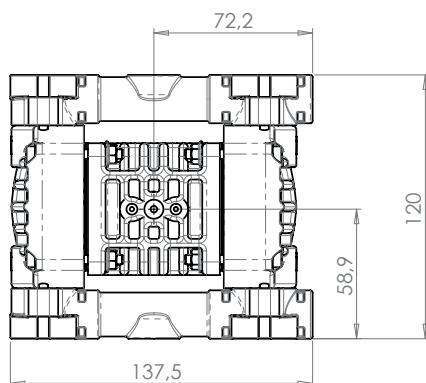
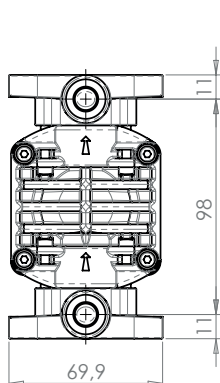
A1 - A2 - A4 - M1 - M2- M4



Standard fittings:

- Suction:
A1
- Delivery:
M1

Any colour variations in our polypropylene and PVDF products are due to the special blends of the raw materials used. The use of high levels of glass and long-fiber carbon filler result in a unique colour that does not in any way affect the quality of the product; on the contrary, it points to the high level of content used to ensure outstanding performance.



BOXER 7

AIR-OPERATED DOUBLE DIAPHRAGM PUMPS



Specifications and types



ATEX Zona 1 (CONDUCT): II2GExhIIIBT4Gb – II2DExhIIIBT135°CDBX
ATEX Zona 2 (STANDARD): II3GExhIIIBT4Gc – II3DExhIIIBT135°CDBX – IM2ExhIMbX *
IECEx: ExhIIIBT4Gb – ExhIIIBT135°CDB

* The string relating to mining applications is not applicable to aluminium BOXER range pumps

BOXER PUMPS CODES ENCODING

ex. IB07-P-HTTPV--

Internal distributor, Boxer 07, body PP, air-side diaph. Hytrel®, product-side diaph. PTFE, AISI 316 L balls, PP ball seats, EPDM O-Ring.

IB07-	P	H	T	T	P	V	-	-
PUMP MODEL	PUMP BODY	AIR-SIDE DIAPHRAGM	FLUID-SIDE DIAPHRAGM	BALLS	BALL SEATS	O-RING	MANIFOLD	VERSION
IB07 - Boxer 07 IB15 - Boxer 15 IMICR - Microboxer IB35 - Boxer 35 IB50 - Boxer 50 IMIN - Miniboxer IB81 - Boxer 81 IB90 - Boxer 90 IB100 - Boxer 100 IB150 - Boxer 150 IB251 - Boxer 251 IB252 - Boxer 252 IB522 - Boxer 522 IB502 - Boxer 502 IB503 - Boxer 503	P - PP PC - PP+CF FC - PVDF+CF A - AISI 316 (L) AL - ALU	N - NBR D - EPDM H - Hytrel® M - Santoprene®	T - PTFE	T - PTFE A - AISI 316 L D - EPDM N - NBR	P - Polypropylene F - PVDF A - AISI 316 L I - PE-UHMW R - PPS L - Aluminium	D - EPDM V - Viton® N - NBR T - PTFE	X* 3* Y* W* K*	C* Z*

Example table, for the table with the complete codes please contact the Debem sales department.

*X = split manifold

*3 = 3rd hole on the manifold

*Y = manifold with NPT fitting

*W = clamp manifold

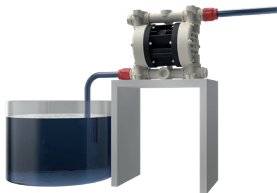
*K = manifold with reinforcement rings

(all on request only)

C = CONDUCT version for ATEX ZONE 1

Z = Version for IECEx Standard

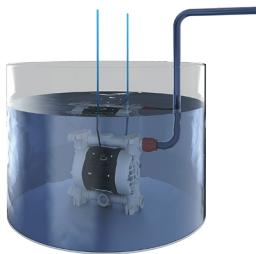
SELF-PRIMING USE



UNDER HEAD USE



IMMERSED



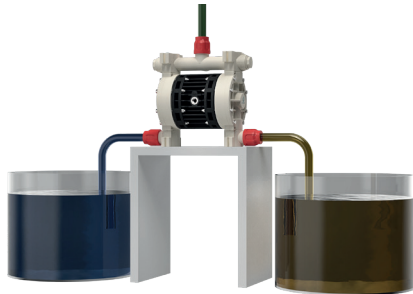
DRUM TRANSFER



SPLIT SUCTION and DELIVERY



SPLIT SUCTION



MAIN APPLICATION SECTORS



AUTOMOTIVE



WATER AND SLUDGE TREATMENT



CHEMICAL INDUSTRY



GRAPHIC INDUSTRY



CERAMIC, STONE, MARBLE, GLASS AND MINING INDUSTRY



PACKING, GLUE, PAPER AND PAPER MILLS



GALVANIC AND ELECTRONIC INDUSTRY



PAINT INDUSTRY