

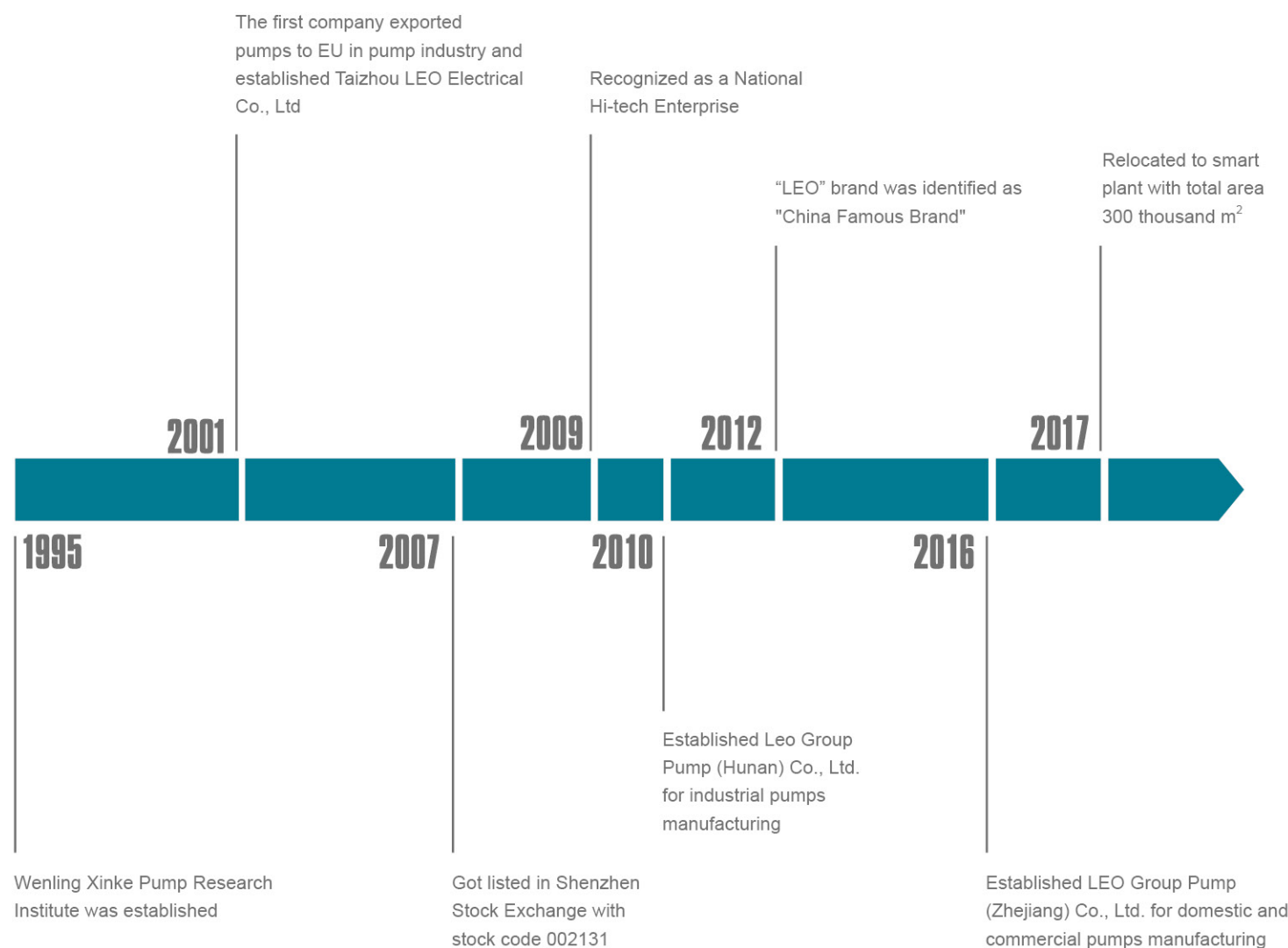
- 01 - - 02 - - 03 - - 04 - - 05 - - 06 - - 07 - - 08 -

Pumps

- Gasoline Water Pump
- Gasoline Sewage Pump
- Gasoline Cast Iron Centrifugal Pump
- Diesel Water Pump



HISTORY



TO KNOW LEO

LEO Group (got listed in Shenzhen Stock Exchange with stock code 002131) is a national high-tech enterprise engaged in R&D, design, manufacture, sales and service of all series pumps and systems. LEO is the first listed company in Chinese pump industry, one of the drafters of pump industry standard and the vice president of drainage and irrigation machinery branch of China Agricultural machinery industry association as well. "LEO" has been identified as "China Famous Brand" by the State Administration of Industry and Commerce. It is mentionable that LEO has the only state-authorized technical center in pump industry.

We have set up many production and sales subsidiaries in key regional markets such as America, Hungary, Belgium, Thailand, Indonesia, United Arab Emirates and Bangladesh and authorized exclusive distribution agency in over 100 countries.

Our products have been sold to over 120 countries and regions, such as Europe, North America, Central & South America, Southeast Asia, Middle East, Africa, Oceania, etc., which play a crucial role in water conservancy, water resources, electric power construction, petrochemical industry, mining, metallurgy, fire-fighting, HVAC (Heating, Ventilation and Air Conditioning), agricultural irrigation, civil water supply and drainage, etc.

LEO has currently two industrial groups respectively for industrial and civilian applications. With four manufacturing bases in Wengling of Zhejiang, Xiangtan of Hunan, Wuxi of Jiangsu and Dalian of Liaoning, LEO possesses a solid foundation to become a world-class pump and system solution provider rapidly.

With over 70 years' professional technology, LEO will continue her consistent creativity and development ability in each pump for human's health.



NUMEROUS MEMBERS, ONE FAMILY

Based on market segment, LEO's pump business is divided into 5 fields, namely water conservancy & water resources, power station, petrochemical industry, mining & metallurgical industry and civilian applications. For each field there's a professional manufacturing base with relevant professional sales teams. Three subsidiary companies, Wuxi LEO Xi Pump, LEO Group Pump (Hunan) and Dalian LEO Pump are all well-known industrial pump manufacturers in their own fields. With over 70 years' industrial pump manufacturing experience and extraordinary comprehensive strength, LEO has become a leading company among all industrial pump manufacturers in China.



Pump Manufacturing Base for Domestic and Commercial Applications (Wenling City, Zhejiang Province)

LEO Group Pump (Zhejiang) Co., Ltd, a wholly-owned subsidiary of LEO Group Co., Ltd, is the core base for R&D, manufacturing, sales and service of domestic and commercial pumps for family water supply, pipeline boosting, garden and field irrigation, HVAC, etc.

The leading products include peripheral pump, jet pump, centrifugal pump, garden submersible pump, fountain pump, pool pump, doestic lifting station, gasoline engine pump, diesel engine pump, submersible pump, submersible borehole pump, submersible sewage pump, stainless steel vertical multistage pump, etc.

The product range covers 15 series with over 2,000 specifications, which are well sold in more than 120 countries and regions. The base has established steady cooperative relationships with world-class pump manufacturers, importers, dealers and hypermarkets.



Pump Manufacturing Base for General Industrial Pumps (Xiangtan City, Hunan Province)

Established in 2010, LEO Group Pump (Hunan) Co., Ltd. is a wholly-owned subsidiary by LEO Group Co., Ltd. Located in Jiuhe Economic Development Zone of Xiangtan City, Hunan Province. Covers an area of 85,000m² and construction area is about 92,635 m² with total investment of approximately 74 million dollars. It is the most important R&D, manufacturing and testing center of LEO Group. The leading products include large mixed flow and axial flow pump (vertical, horizontal, oblique, tubular, submersible etc.), double-suction centrifugal pump, multistage centrifugal pump, slurry pump, desulphurization pump and submersible centrifugal pump. Products are mainly used in mine, metallurgy, coal washing, FGD, municipal water etc.



Pump Manufacturing Base for Water Conservancy & Water Resources (Wuxi City, Jiangsu Province)

Formerly known as Wuxi Xi Pump Manufacturing Co., Ltd., a well-known manufacturer of water conservancy, is specialized in large and medium-sized pumps production for urban water supply and drainage, farmland irrigation, water conservancy projects and large water diversion project. The main products cover 32 series with nearly 1000 specifications. Products exported to more than 20 countries in Asia, Latin-America, Europe and Oceania.

As a main supplier, the base provides large pumps for South-to-North Water Diversion Project—a national key project. There are over 140 technicians, including 1 professor level senior engineer, 16 senior engineers, and 39 engineers.



Pump Manufacturing Base for Petrochemical Industry (Dalian City, Liaoning Province)

It is the pump manufacturing base for petrochemical industry, combined with Dalian LEO Huaneng Pump Co., Ltd and LEO (Dalian) Industrial Pump Technology Center Co., Ltd.

Formerly known as Dalian Huaneng Corrosion-Resistant Pump Works, the base is specialized in production of petrochemical pumps for crude oil transportation, crude oil refinery, heavy chemical industry, coal chemical industry and fine chemistry, etc. The base focuses on design and manufacture of 30 series (OH, BB, VS, etc.) of petrochemical pumps with over 3000 specifications, which are in accordance with API and ISO standard.

LEO (Dalian) Industrial Pump Technology Center Co., Ltd. is one of the research branch of national level technology center for petrochemical pumps, specializes in R&D , design of pumps of petro chemistry, coal chemical industry, long-distance transport pipes, energy resources, fine chemicals industry, etc. Design and develop software and large laboratories, explore liquid transport schemes under severe conditions and solve the difficult projects of ultralow temperature, high temperature, high pressure, low cavitation, highly corrosive, energy recovery, etc.



Application

- To transfer clean water with liquid temperature between 0°C and 40°C
- Applicable in water supply and drainage for factories,mines,municipal facilities as well as field irrigation,etc.

Features

- New unique design with ergonomic feature
- Portable and compact pump frame
- High quality engine with excellent performance and long service life
- Impeller designed with high efficient hydraulic system
- Low fuel consumption

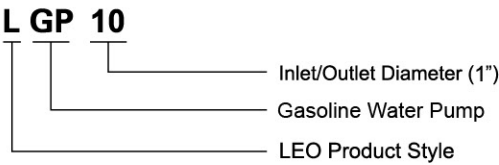
Pump

- Anti-rust cast iron impeller and diffuser
- Max.Suction: 8 m , Suck 5 m needs 120 s
- Inlet/outlet: 25 mm/38 mm

Engine

- Single cylinder, 2-stroke, Air-cooled
- Max.power: 1.6 HP
- Rated speed: 7500rpm
- Mixture ratio of fuel: 1:25 (2-stroke engine oil and 90 octane gasoline or higher)

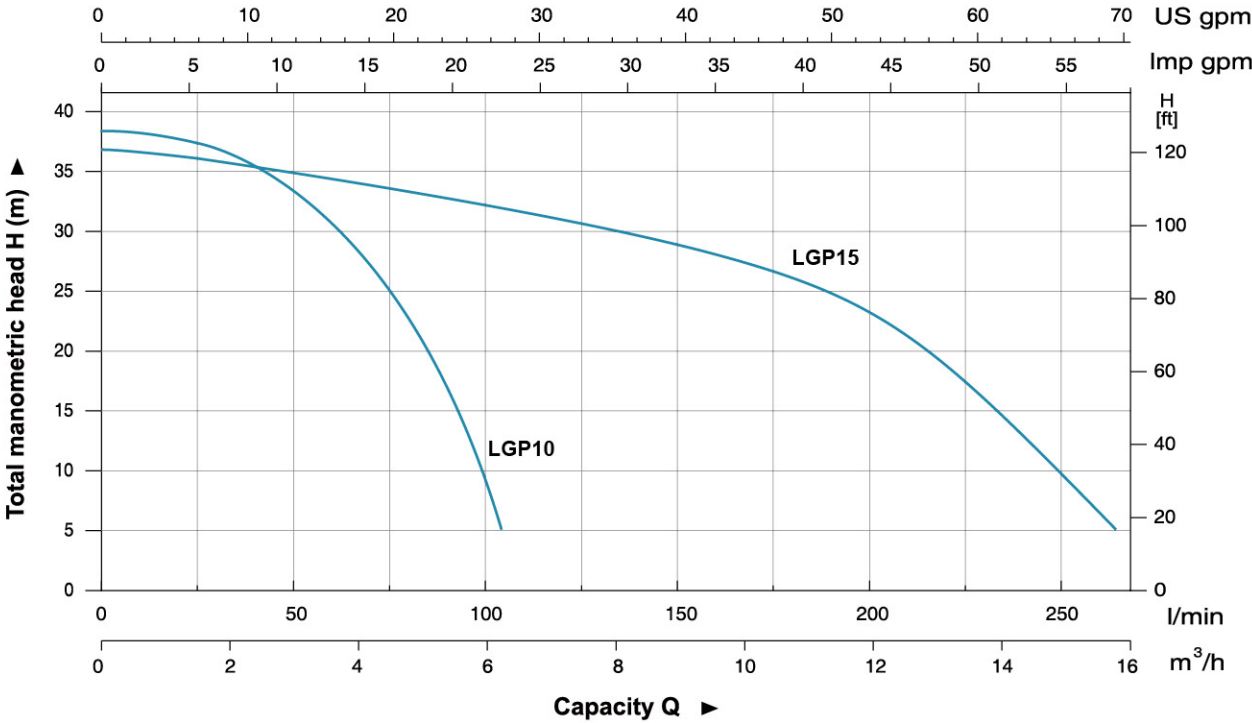
Identification Codes



Technical Data

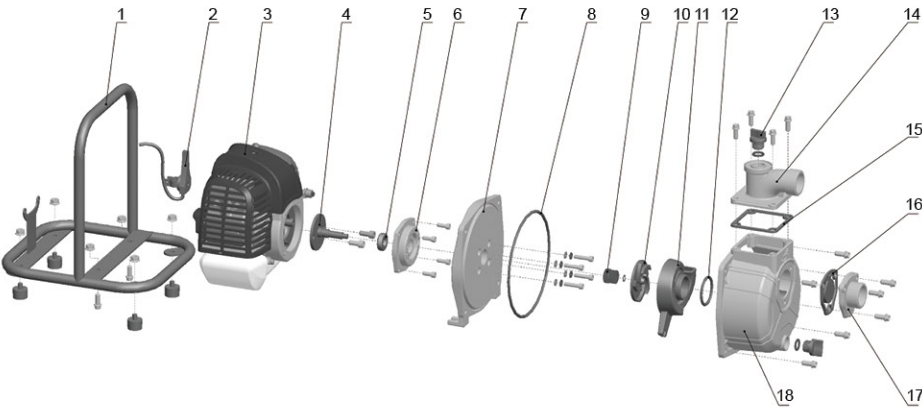
Table with 15 columns: Model, Power, Mixed Fuel tank, Displacement, Q (m³/h), Q (l/min), and H (m) for various flow rates (0, 2, 4, 6, 8, 10, 12, 14, 16, 18).

Hydraulic Performance Curves



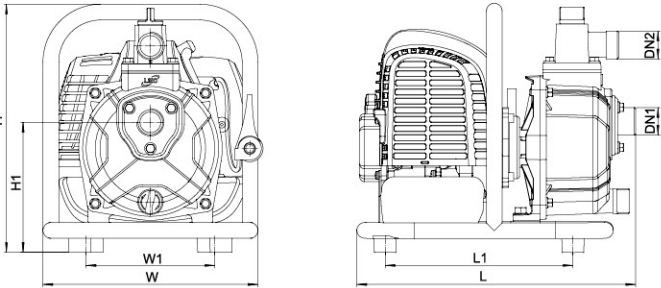
Materials Table

Table with 3 columns: No., Part, and Material. Lists 18 components including Frame, Throttle trigger, Engine, Crankshaft, Bearing, Seat connection, Pump cover, O-ring, Mechanical seal, Impeller, Diffuser, O-ring, Plug, Outlet, Seal, Non-return valve, Inlet, and Pump body.



Package Information

Table with 6 columns: Model, GW (Kgs), L (mm), W (mm), H (mm), and Quantity (PCS/20 TEU). Rows for LGP10 and LGP15.



Dimension

Table with 9 columns: Model, DN1, DN2, L (mm), W (mm), H (mm), L1 (mm), W1 (mm), and H1 (mm). Rows for LGP10 and LGP15.



Application

- To transfer clean water with liquid temperature between 0°C and 40°C
- Application in water supply and drainage for factories, mines, municipal facilities as well as field irrigation, ect.

Features

- 4-stroke gasoline engine power performance, structural optimization and upgrading
- Ignition more convenient, more complete combustion, low energy consumption, more environmentally friendly
- Strengthened pump body ensures more durable and reliable service
- Better sealing effect by using special mechanical seal
- Impeller designed with high efficient hydraulic system

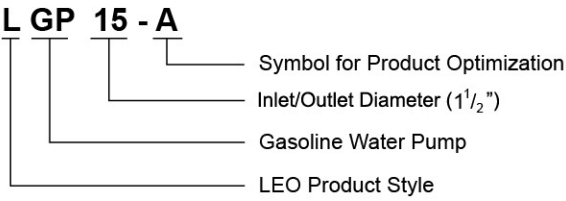
Pump

- Anti-rust cast iron impeller and diffuser
- Max.Suction: 8 m , Suck 5 m needs 120 s
- Inlet/outlet: 38 mm

Engine

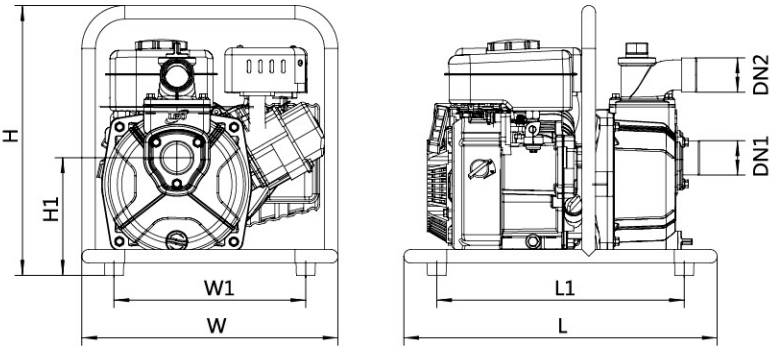
- Single cylinder, 4-stroke, Air-cooled
- Max.power: 3 HP
- Rated speed: 3600 rpm

Identification Codes



Technical Data

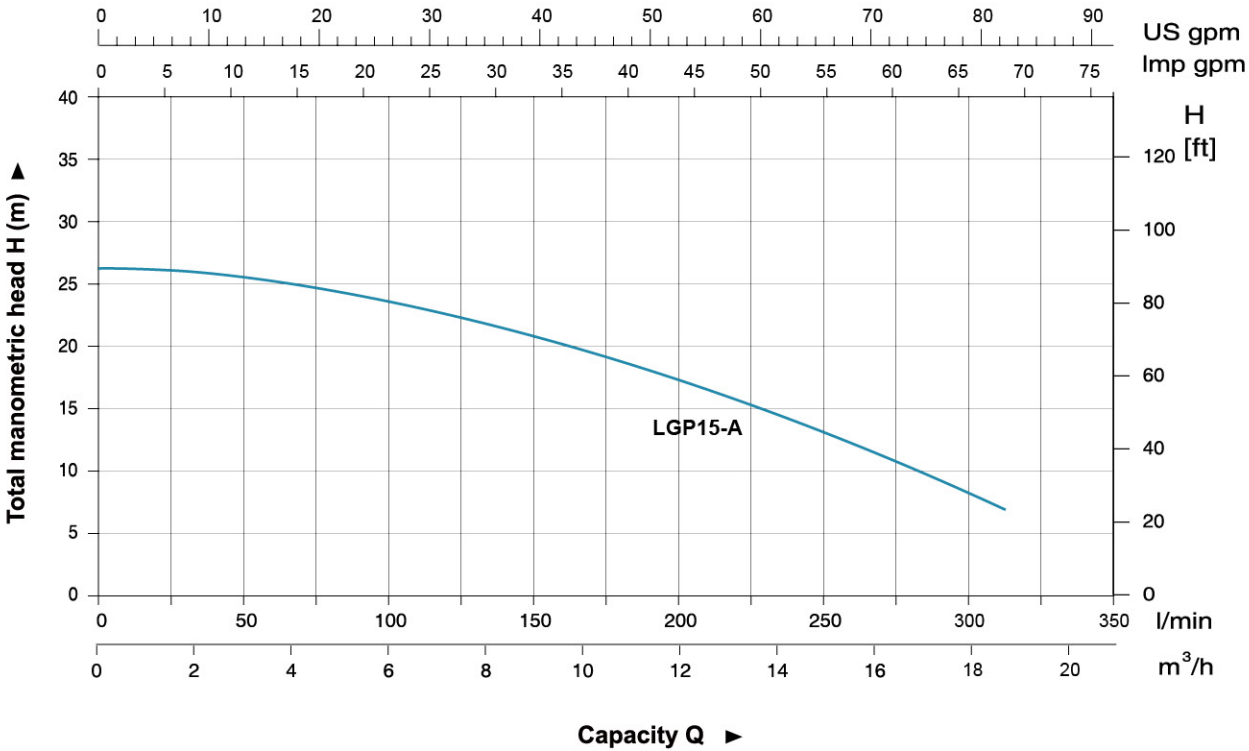
Table with 16 columns: Model, Power, Fuel tank, Engine oil, Displacement, Q (m³/h), and Q (l/min) for various flow rates (0 to 18 m³/h).



Dimension

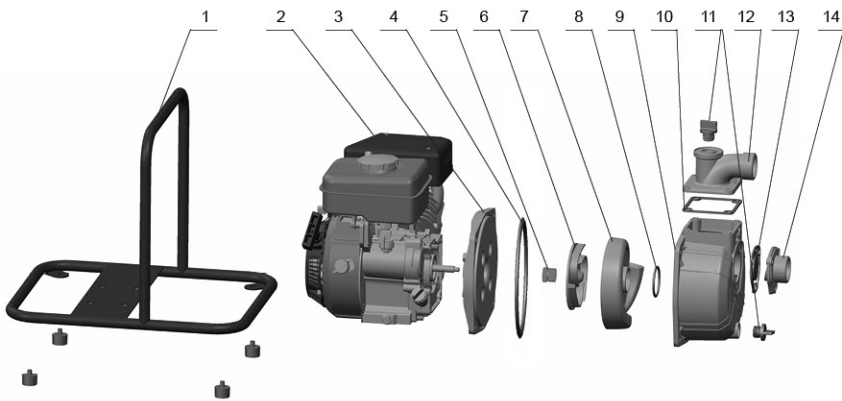
Table with 9 columns: Model, DN1, DN2, L (mm), W (mm), H (mm), L1 (mm), W1 (mm), H1 (mm).

Hydraulic Performance Curves



Materials Table

Table with 3 columns: No., Part, Material. Lists 14 components including Frame, Engine, Pump cover, O-ring, Mechanical seal, Impeller, Diffuser, Seal, Plug, Outlet, Non-return valve, and Inlet.



Package Information

Table with 6 columns: Model, GW (Kgs), L (mm), W (mm), H (mm), Quantity (PCS/20 TEU).





Applicatio

- To transfer clean water with liquid temperature between 0°C and 40°C
- Application in water supply and drainage for factories, mines, municipal facilities as well as field irrigation, ect.

Features

- Strengthened pump body ensures more durable and reliable service
- Better sealing effect by using special mechanical seal
- 5-direction outlet for convenient use
- Improved starter handle for easier starting
- 20% increased loading quantity thanks to very compact design
- Less gasoline consumption
- LEO engine as default, BS/Honda engine is optional

Pump

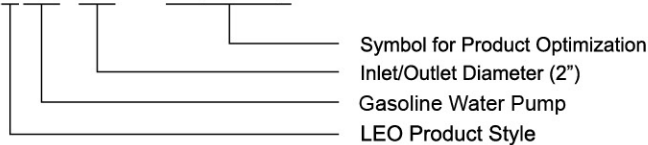
- Anti-rust cast iron impeller and diffuser
- High quality forged steel crankshaft
- Max.Suction: 8 m , Suck 5 m needs 120 s
- Inlet/outlet: 50 mm/80 mm

Engine

- Single cylinder, 4-stroke, Air-cooled
- Max.power: 5 HP/5.5 HP/6.5 HP
- Rated speed: 3600 rpm
- Reliable engine equipped with low engine oil shut off system

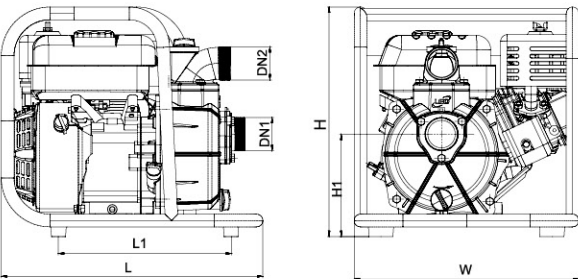
Identification Codes

LGP 20 - A(B.2B)



Technical Data

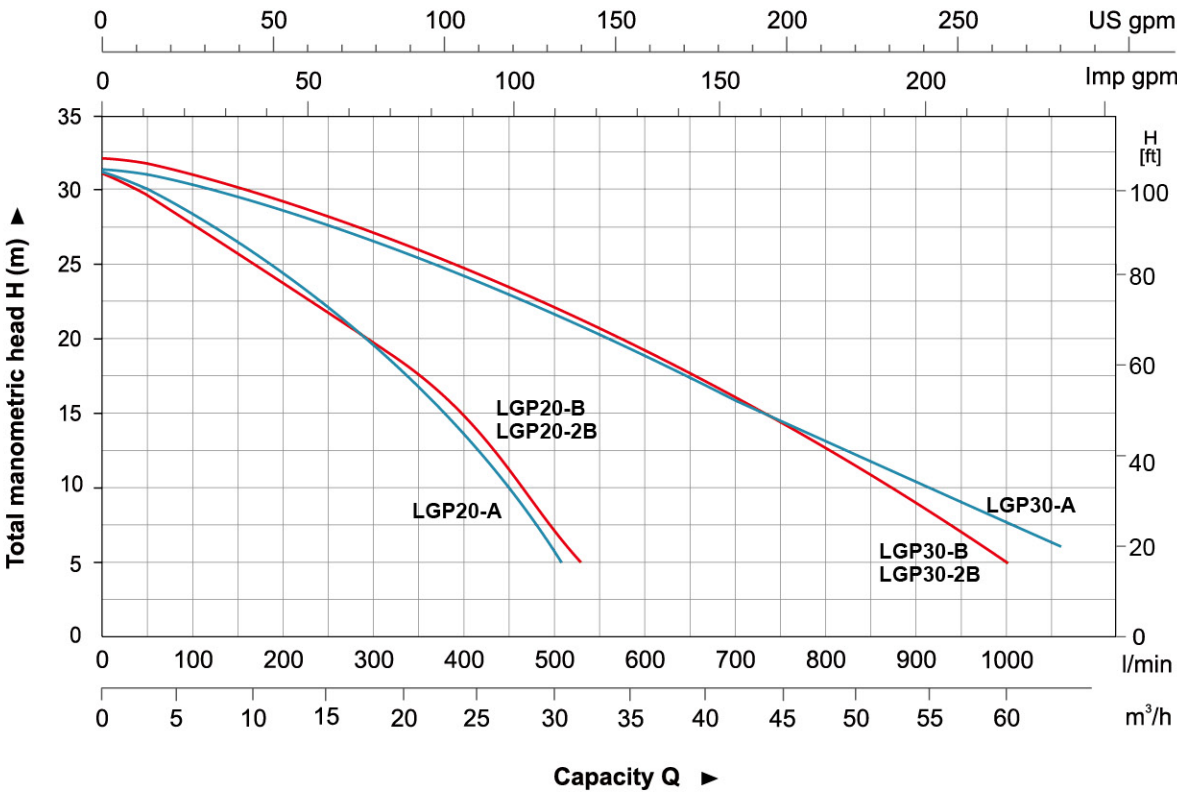
Model	Power	Fuel tank	Engine Oil	Displacement	Q (m³/h)	0	5	10	15	20	25	30	35	40	45	50	55	60
	HP	L	L	cc	Q (l/min)	0	83.3	166.7	250	333.3	416.7	500	583.3	666.7	750	833.3	916.7	1000
LGP20-A	5.5	2.8	0.55	163	H (m)	32	29.1	25.2	21.5	16.6	11.3	6.5	-	-	-	-	-	-
LGP30-A	6.5	2.8	0.55	196		32	30.4	29.3	27.1	25.5	23	20.5	18	16.2	13.5	11	9	6
LGP20-B	5	2.8	0.58	163		32	28	24.5	21	17.5	14	7.5	-	-	-	-	-	-
LGP30-B	5	2.8	0.58	163		31	30	28	26.5	25	23	20	17.5	15	13.5	10	6.5	4
LGP20-2B	5	3.1	0.6	163		32	28.5	25	22	18	14	7.5	-	-	-	-	-	-
LGP30-2B	5	3.1	0.6	163		33	32	30	28.4	27	25	22	19.3	17	15.5	12	8.6	5



Dimension

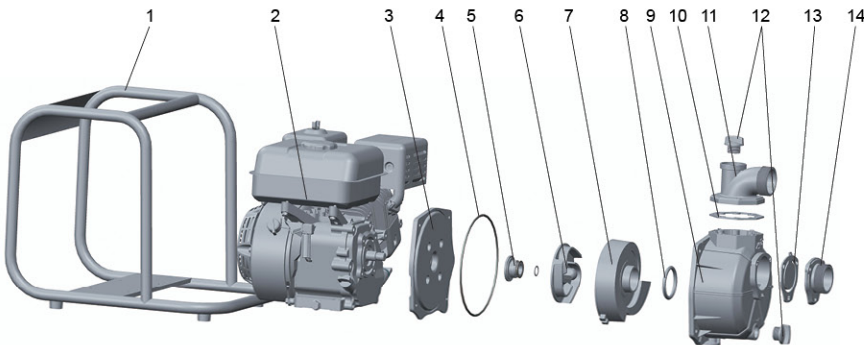
Model	DN1	DN2	L (mm)	W (mm)	H (mm)	H1 (mm)
LGP20-A	2"	2"	455	397.5	405.5	181
LGP30-A	3"	3"	455	397.5	405.5	181
LGP20-B	2"	2"	530	420	425	181
LGP30-B	3"	3"	530	420	425	190.5
LGP20-2B	2"	2"	530	420	425	183
LGP30-2B	3"	3"	530	420	425	190

Hydraulic Performance Curves



Materials Table

No.	Part	Material
1	Frame	Steel
2	Gasoline engine	
3	Pump cover	ADC12
4	O-ring	NBR
5	Mechanical seal	Carbon/Ceramic
6	Impeller	Cast iron
7	Diffuser	Cast iron
8	O-ring	NBR
9	Pump body	Aluminum
10	Gasket	NBR
11	Outlet	Aluminum
12	Filling plug	PA6
13	Non-return valve	NBR
14	Inlet	Aluminum



Package Information

Model	GW (Kgs)	L (mm)	W (mm)	H (mm)	Quantity (PCS/20' TEU)
LGP20-A	22.5	470	412	432	305
LGP30-A	24	470	412	432	305
LGP20-B	24	545	435	435	245
LGP30-B	25	545	435	435	245
LGP20-2B	25.2	545	435	435	245
LGP30-2B	27.2	545	435	435	245





Application

- To transfer clean water with liquid temperature between 0°C and 40°C
- Application in water supply and drainage for factories, mines, municipal facilities as well as field irrigation, ect.
- Suitable for longer distance and greater height water transfer

Features

- New unique design with ergonomic feature
- Portable and compact pump frame
- High quality motor with excellent performance and long service life
- Impeller designed with high efficient hydraulic system
- Low fuel consumption
- LEO engine as default, BS/Honda engine is optional

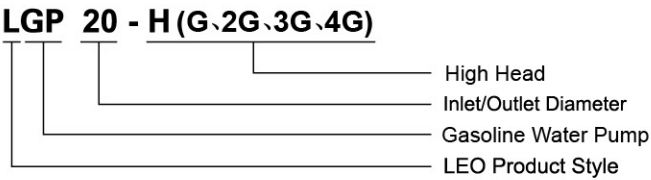
Pump

- Anti-rust cast iron diffuser
- Max.Suction: 8 m , Suck 5 m needs 120 s
- Inlet/outlet: 50 mm/2 x 38 mm+1 x 50 mm
38 mm/1 x 38 mm+2 x 25 mm

Engine

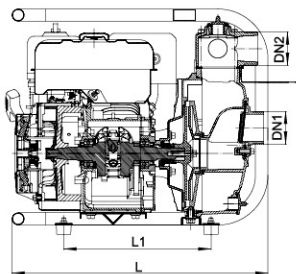
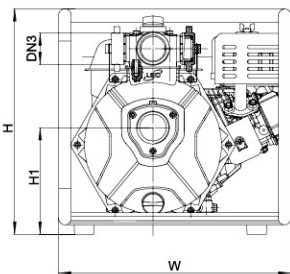
- Single cylinder, 4-stroke, Air-cooled
- Max.power: 6.5 HP
- Rated speed: 3600 rpm
- Reliable engine equipped with low engine oil shut off system

Identification Codes



Technical Data

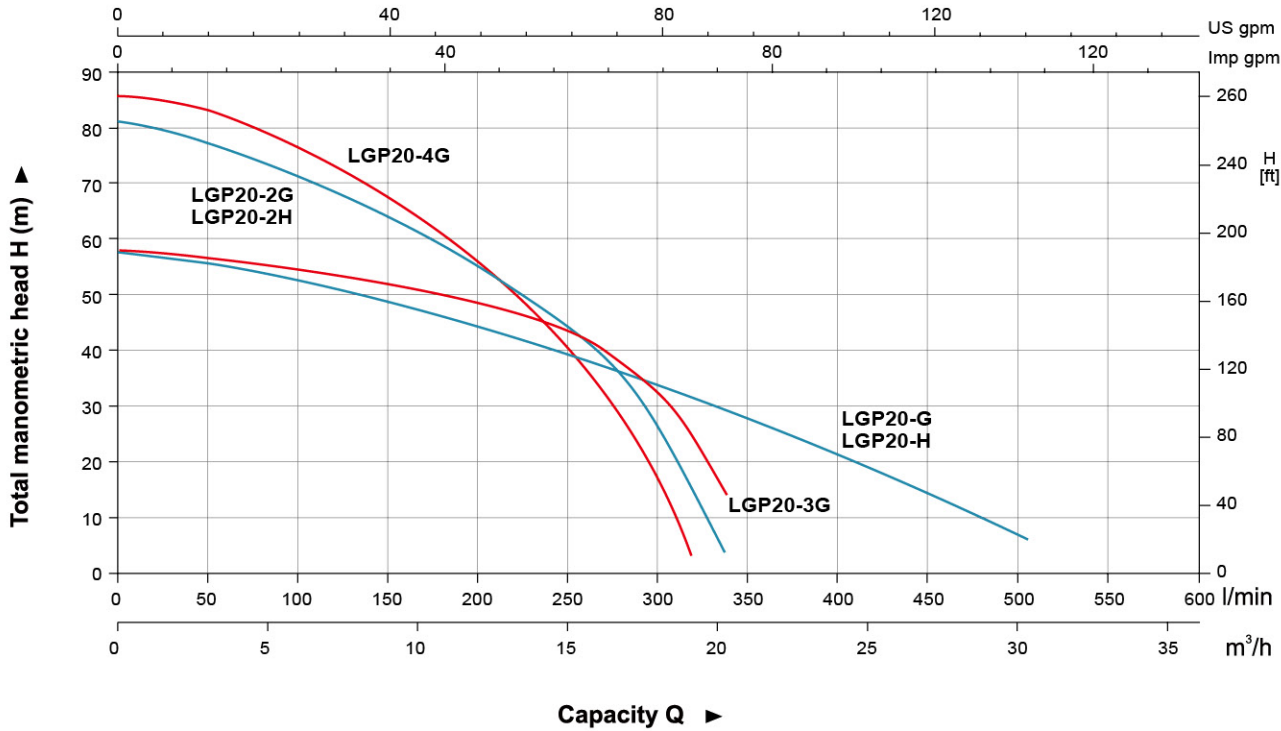
Model	Power	Fuel tank	Engine Oil	Displacement	Q (m³/h)	Q (l/min)	0	5	10	15	20	25	30
	HP	L	L	cc									
LGP20-H	6.5	2.8	0.55	196	H (m)	58	0	83.3	166.7	250	333.3	416.7	500
LGP20-2H	6.5	2.8	0.55	196			58	51	45	38.5	29	19	6
LGP20-G	6.5	2.8	0.58	196			81	72.5	60	45	5	-	-
LGP20-2G	6.5	2.8	0.58	196			59	54	46.8	39	30	20	5.4
LGP20-3G	6.5	3.1	0.6	208			84	77.7	61.6	38.3	4.9	-	-
LGP20-4G	6.5	3.1	0.6	208			59	55.2	50	42.8	15	-	-
							86	77.6	60.7	40	4.4	-	-



Dimension

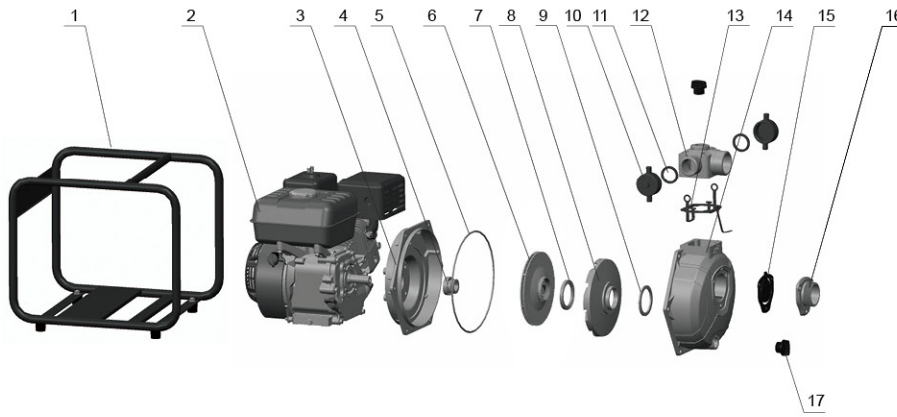
Model	DN1	DN2	2×DN3	L (mm)	W (mm)	H (mm)	H1 (mm)
LGP20-H	2"	2"	1.5"	463	398	406	200
LGP20-2H	2"	2"	1.5"	463	398	406	200
LGP20-G	2"	2"	1.5"	530	420	425	192.2
LGP20-2G	2"	2"	1.5"	530	420	425	192.2
LGP20-3G	1.5"	1.5"	1"	530	420	425	190
LGP20-4G	1.5"	1.5"	1"	530	420	425	190

Hydraulic Performance Curves



Materials Table

No.	Part	Material
1	Frame	Steel
2	Engine	
3	Bracket	Aluminum
4	Mechanical seal	Carbon/Ceramic
5	O-ring	NBR
6	Impeller	Aluminum
7	Seal ring	NBR
8	Diffuser	HT200
9	Seal ring	NBR
10	Pipe blanking cap	PP
11	Seal ring	NBR
12	Outlet	Aluminum
13	Gasket	NBR
14	Pump body	Aluminum
15	Non-return valve	NBR
16	Inlet	Aluminum
17	Filling plug	PA6



Package Information

Model	GW (Kgs)	L (mm)	W (mm)	H (mm)	Quantity (PCS/20 TEU)
LGP20-H	23.22	470	412	432	305
LGP20-2H	23.24	470	412	432	305
LGP20-G	25.5	545	435	465	196
LGP20-2G	27	545	435	465	196
LGP20-3G	27.2	545	435	465	196
LGP20-4G	28.2	545	435	465	196





Application

- To transfer clean water with liquid temperature between 0°C and 40°C
- Application in water supply and drainage for factories, mines, municipal facilities as well as field irrigation, ect.

Features

- Strengthened cast-iron pump body ensures more durable and reliable service
- Impeller designed with high efficient hydraulic system
- High quality engine with excellent performance and long service life
- Better sealing effect by using special mechanical seal
- Low fuel consumption

Pump

- Anti -rust cast iron pump body
- Aluminum alloy impeller
- Max.Suction: 8 m , Suck 5 m needs 120 s
- Inlet/outlet: 50 mm

Engine

- Single cylinder, 4-stroke, Air-cooled
- Max.power: 6.5 HP
- Rated speed: 3600 rpm
- Reliable engine equipped with low engine oil shut off system

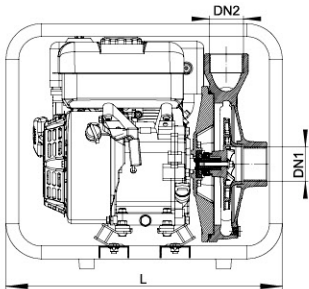
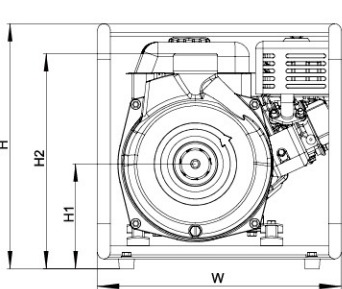
Identification Codes

L GP 20 i - A

- Symbol for Product Optimization
- Features
- Inlet/Outlet Diameter(2")
- Gasoline Engine Pump
- LEO Product Style

Technical Data

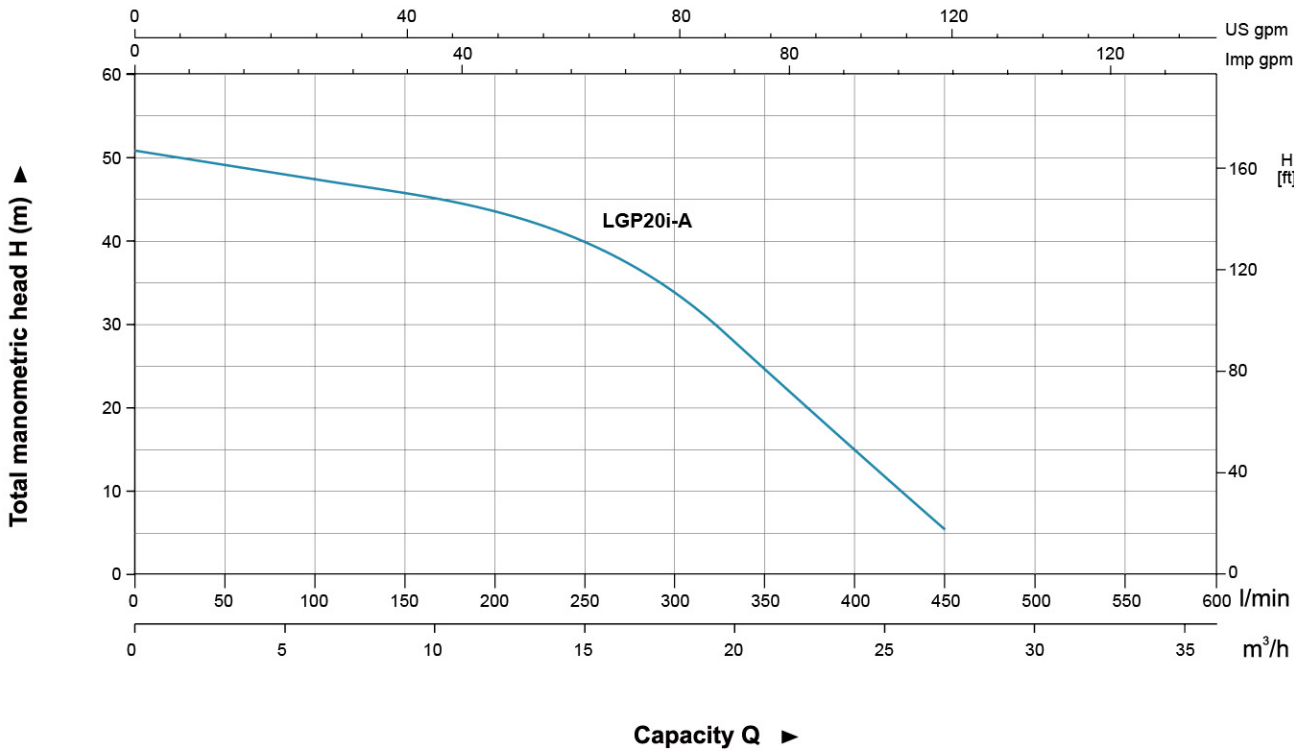
Model	Power	Fuel tank	Engine Oil	Displacement	Q (m³/h)	0	5	10	15	20	25
	HP	L	L	cc	Q (l/min)	0	83.3	166.7	250	333.3	416.7
LGP20i-A	6.5	2.8	0.55	196	H(m)	51	48	46	40	28	11.5



Dimension

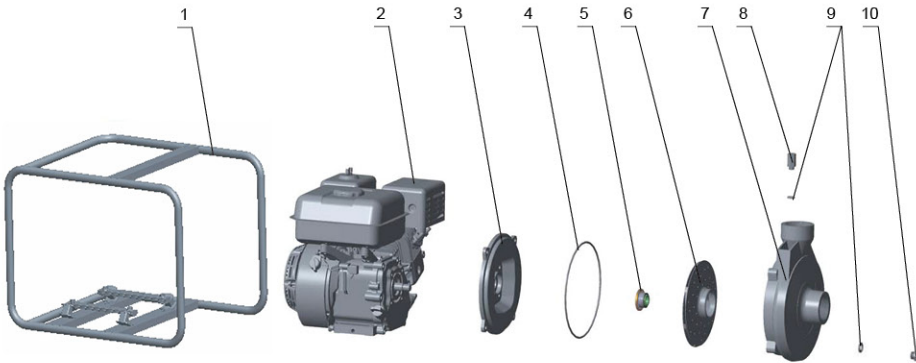
Model	DN1	DN2	L (mm)	W (mm)	H (mm)	H1 (mm)	H2 (mm)
LGP20i-A	2"	2"	476	420	440	180	370

Hydraulic Performance Curves



Materials Table

No.	Part	Material
1	Frame	Steel
2	Engine	
3	Pump cover	HT200
4	O-ring	NBR
5	Mechanical seal	Carbon/Ceramic
6	Impeller	Aluminum
7	Pump body	HT200
8	Plug	HPb59-1
9	O-ring	NBR
10	Plug	HPb59-1



Package Information

Model	GW (Kgs)	L (mm)	W (mm)	H (mm)	Quantity (PCS/20 TEU)
LGP20i-A	30	470	433	450	325





Application

- Can be used to transfer slurry, liquids that containing mud, sand, small rocks and other debris diameter less than 22mm.
- Sewage treatment for civil engineering, mines, quarries and municipal facilities, ect.
- Water supply and drainage for factories,mins,municipal facilities as well as field irrigation, ect.

Features

- All new design with ergonomic feature
- Reliable 4-stroke gasoline engine with low fuel consumption and high quality crankshaft
- Portable, durable and compact pump frame
- Durable sealing system with special mechanical seal
- Silicon carbide mechanical seal for increased abrasive resistance, longer life and less maintainance
- Pump body can easily disassembled and assembled for cleaning out debris, or pump repair

Pump

- Anti-rust cast iron impeller and diffuser
- Max.Suction: 8 m, Suck 5 m needs 120 s
- Inlet/outlet: 3"
- Max. diameter of particle: 22 mm
- Liquid temperature range: 0°C ~ 40°C

Engine

- Single cylinder, 4-stroke, Air-cooled
- Max.power: 6.5 HP
- Rated speed: 3600 rpm
- Reliable engine equiped with low engine oil shut off system

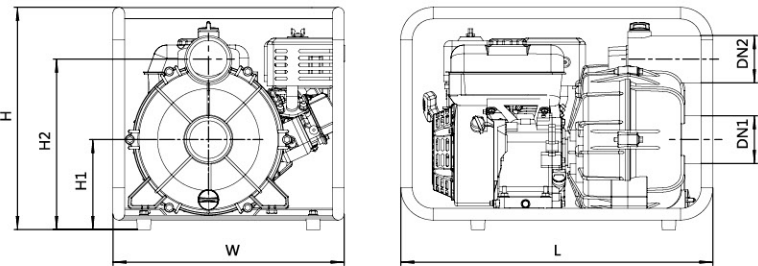
Identification Codes

L GP 30 - W



Technical Data

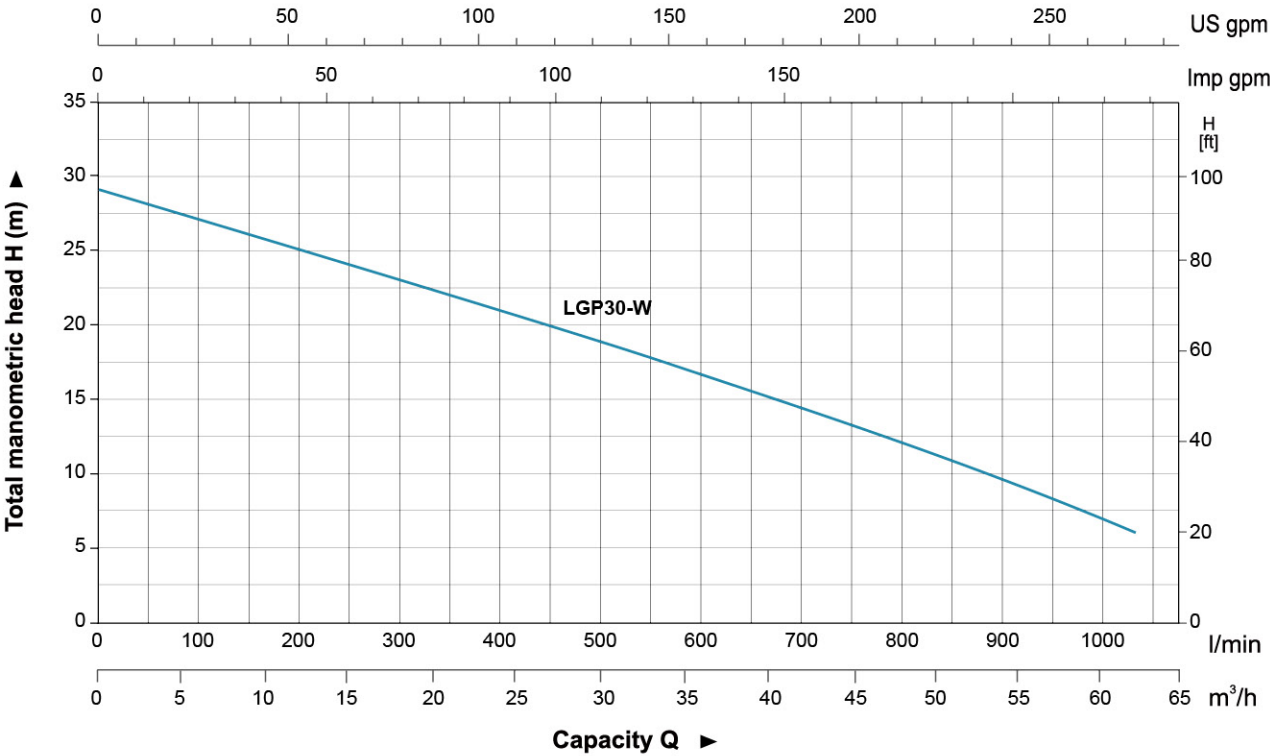
Model	Power	Fuel tank	Engine Oil	Displacement	Q (m³/h)	0	5	10	15	20	25	30	35	40	45	50	55	60
	HP	L	L	cc	Q (l/min)	0	83.3	166.7	250	333.3	416.7	500	583.3	666.7	750	833.3	916.7	1000
LGP30-W	6.5	2.8	0.55	196	H(m)	29	27	25.5	24	22	20.5	18.5	17	15.5	14.5	11.5	9.2	7



Dimension

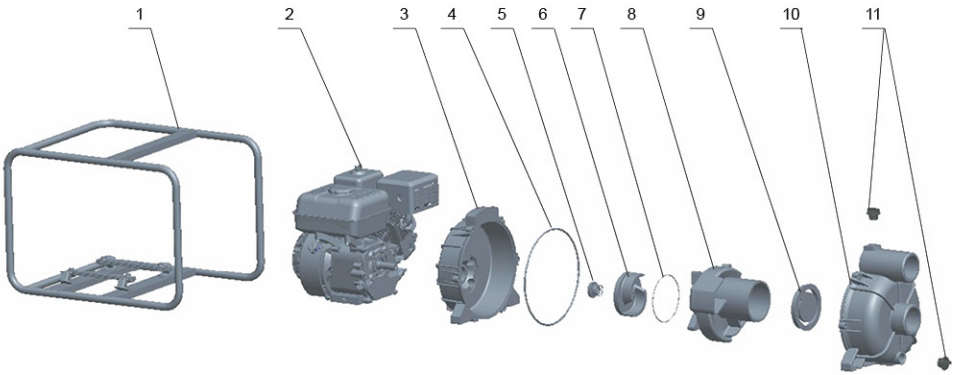
Model	DN1	DN2	L (mm)	W (mm)	H (mm)	H1 (mm)	H2 (mm)
LGP30-W	3"	3"	590	437	431	195	347

Hydraulic Performance Curves



Materials Table

No.	Part	Material
1	Frame	Steel
2	Engine	
3	Pump cover	Aluminum
4	O-ring	NBR
5	Mechanical seal	Silicon carbide / Silicon carbide
6	Impeller	HT200
7	O-ring	NBR
8	Diffuser	HT200
9	Non-return valve	NBR
10	Pump body	Aluminum
11	Plug	ABS



Package Information

Model	GW (Kgs)	L (mm)	W (mm)	H (mm)	Quantity (PCS/20' TEU)
LGP30-W	34.6	605	450	459	168





Application

- To transfer clean water with liquid temperature between 0°C and 40°C
- Application in water supply and drainage for factories, mines, municipal facilities as well as field irrigation, ect.

Features

- All new design with ergonomic feature
- High lift series with LEO high efficient hydraulic system
- Reliable 4-stroke gasoline engine with low fuel consumption and high quality crankshaft
- Portable, durable and compact pump frame
- Durable sealing system with special mechanical seal
- Optional outlet selection

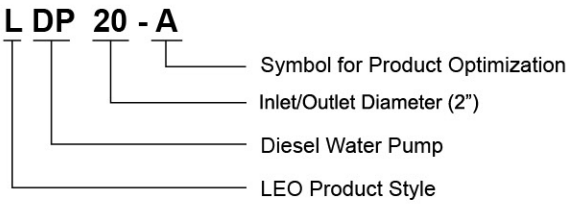
Pump

- Anti-rust cast iron impeller and diffuser
- Max.Suction: 8 m , Suck 5 m needs 120 s
- Inlet/outlet: 2"/3"

Engine

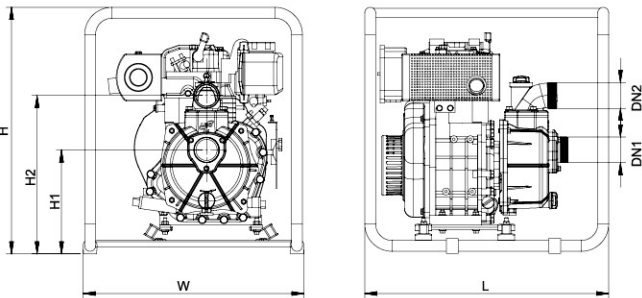
- Single cylinder,4-stroke,Air-cooled
- Max.power: 3.8 HP
- Rated speed: 3600 rpm
- Reliable engine equipped with low engine oil shut off system

Identification Codes



Technical Data

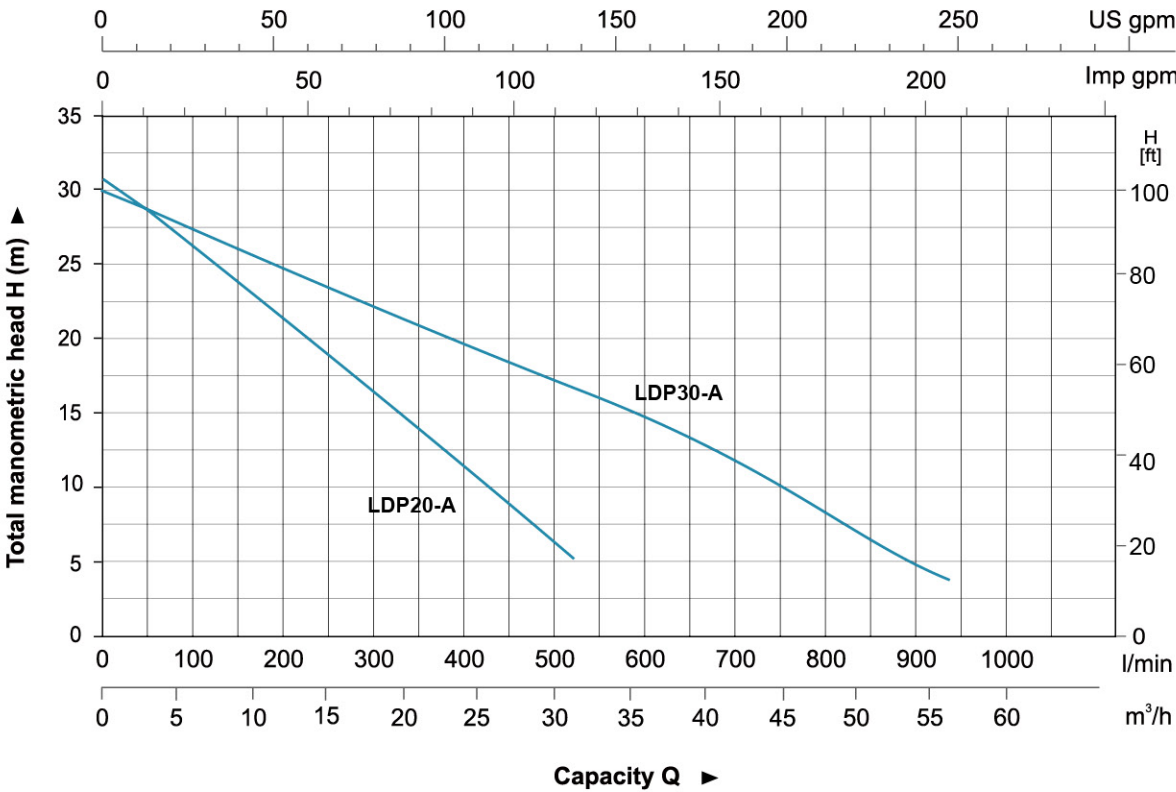
Model	Power	Fuel tank	Engine Oil	Displacement	Q (m³/h)	0	5	10	15	20	25	30	35	40	45	50	55
	HP	L	L	cc	Q (l/min)	0	83.3	166.7	250	333.3	416.7	500	583.3	666.7	750	833.3	916.7
LDP20-A	3.8	2.5	0.8	219	H (m)	31	27	23	18.4	15	10	5.9	-	-	-	-	-
LDP30-A	3.8	2.5	0.8	219		30	27	26.5	24.1	21.4	19.3	16.7	15.8	13.5	11	8	4.8



Dimension

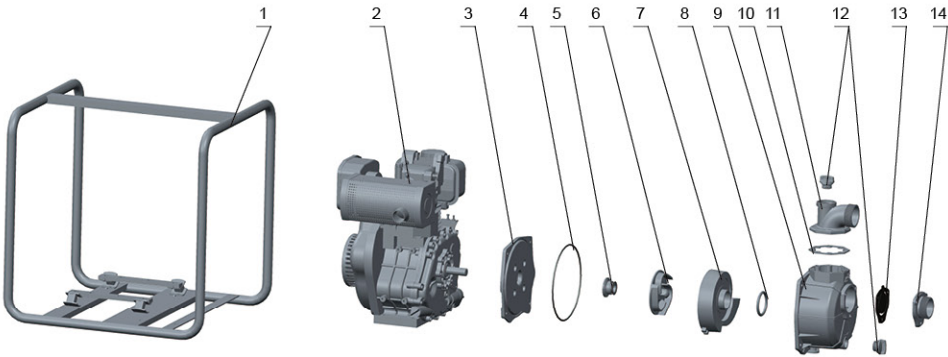
Model	DN1	DN2	L (mm)	W (mm)	H (mm)	H1 (mm)	H2 (mm)
LDP20-A	2"	2"	470	427	536	225	335
LDP30-A	3"	3"	470	427	536	240	390

Hydraulic Performance Curves



Materials Table

No.	Part	Material
1	Frame	Steel
2	Engine	
3	Pump cover	Aluminum
4	O-ring	NBR
5	Mechanical seal	Carbon/Ceramic
6	Impeller	HT200
7	Diffuser	HT200
8	O-ring	NBR
9	Pump body	Aluminum
10	Seal	NBR
11	Outlet	Aluminum
12	Plug	ABS
13	Non-return valve	NBR
14	Inlet	Aluminum



Package Information

Model	GW (Kgs)	L (mm)	W (mm)	H (mm)	Quantity (PCS/20 TEU)
LDP20-A	35.1	485	435	550	244
LDP30-A	36.2	485	435	550	244





دانشی بروز - ایده ای بروز

MEMO

[illegible]

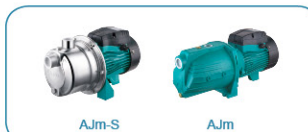
Pump Range



- Peripheral Pump



- Self-Priming Peripheral Pump



- Jet Pump



- Jet Pump for Deep Wells



- Centrifugal Pump



- Multistage Centrifugal Pump



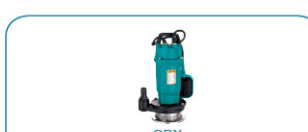
- Self-Priming Centrifugal Pump



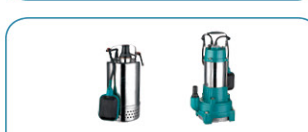
- Stainless Steel Multistage Centrifugal Pump



- Stainless Steel Centrifugal Pump



- Submersible Pump



- Stainless Steel Submersible Pump



- Stainless Steel Submersible Sewage Pump



- Flexible Shaft Pump



- Domestic Lifting Station



- Pool Pump



- Garden Submersible Pump



- Garden Jet Pump



- Pressure Booster System



- Fountain Pump



- Standard Centrifugal Pump



- Submersible Borehole Pump



- Gasoline/Diesel Water Pump



- Booster Pump/Circulation Pump

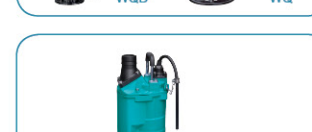
Pump Range



- Submersible Sewage Pump



- Submersible Sewage Pump



- Submersible Dewatering Pump



- Submersible Slurry Pump



- Stainless Steel Vertical Multistage Pump



- Stainless Steel Horizontal Multistage Pump



- Semi-open Impeller Stainless Steel Centrifugal Pump



- Stainless Steel Standard Centrifugal Pump



- Pressure Booster System



- Vertical In-line Pump



- Bare Shaft End Suction Centrifugal Pump



- End Suction Centrifugal Pump

www.goharab.com
info@goharab.com

تلفن: ۰۲۱-۷۷۱۱۰۷۶۳

فکس: ۰۲۱-۸۹۷۸۸۶۶۷

