

Brass rotary vane pumps PO 70-400 series

The rotary vane pumps, manufactured by Fluid-o-Tech® and sold worldwide under the trademark Rotoflow®, are volumetric pumps designed for pumping water and moderate aggressive liquids with low flow at high pressure.

Technical features and manufacturing characteristics

The rotary vane pump is brass made with a stainless steel AISI 303 rotor, while the pumping chamber and the vanes are in carbon graphite. The inlet and outlet ports are 3/8" GAS or NPT threaded. The pumps are designed to be directly mounted to the motor with a stainless steel clamp. For different mounting arrangements see our technical info "optional mountings". Maximum operative temperature: 70 °C (158 F).

Available upon request:

- Viton®/EPDM seals
- Built-in relief valve
- Built-in 100 mesh strainer
- Flange mount
- California AB 1953 compliant brass



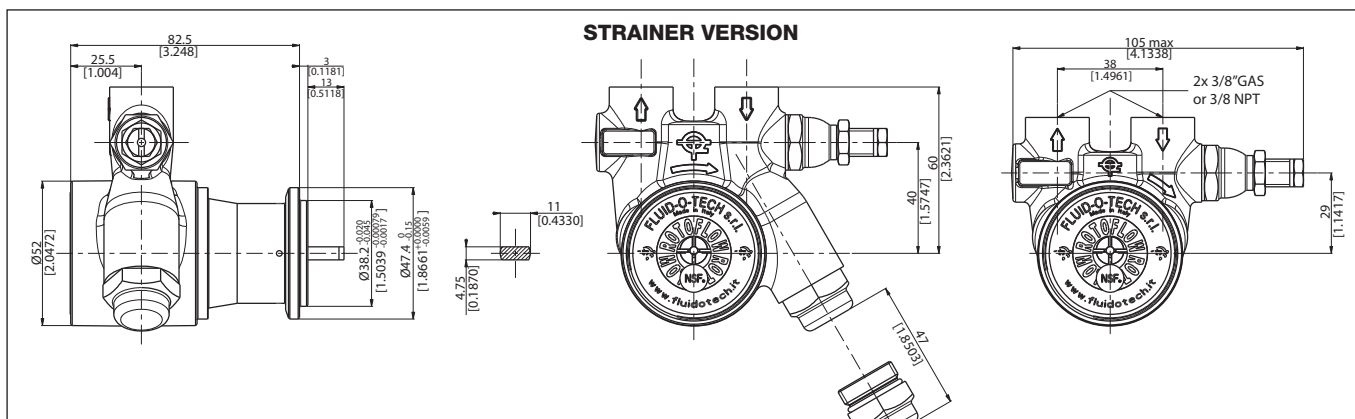
MAIN APPLICATIONS

- Beverage vending machines
- Post mix drink dispensers
- Espresso coffee machines
- Water treatment
- Water dispensers
- Cooling systems



TECHNICAL INFORMATION

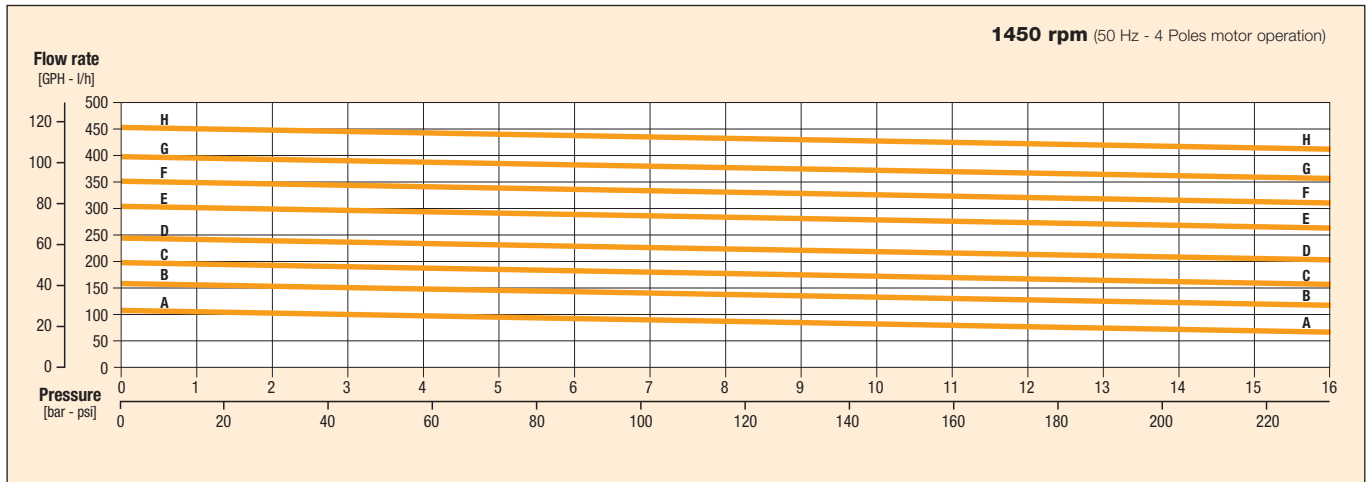
Pump housing material	Brass	Max static pressure	20 bar/290 psi
Pumping chamber	Carbon graphite	Pump weight (clamp mount)	w/o strainer 1.1 kg (2.5 lb)
Ports	3/8" GAS or NPT		w strainer 1.3 kg (2.9 lb)
Speed limit	1725 rpm		



Brass rotary vane pumps PO 70-400 series

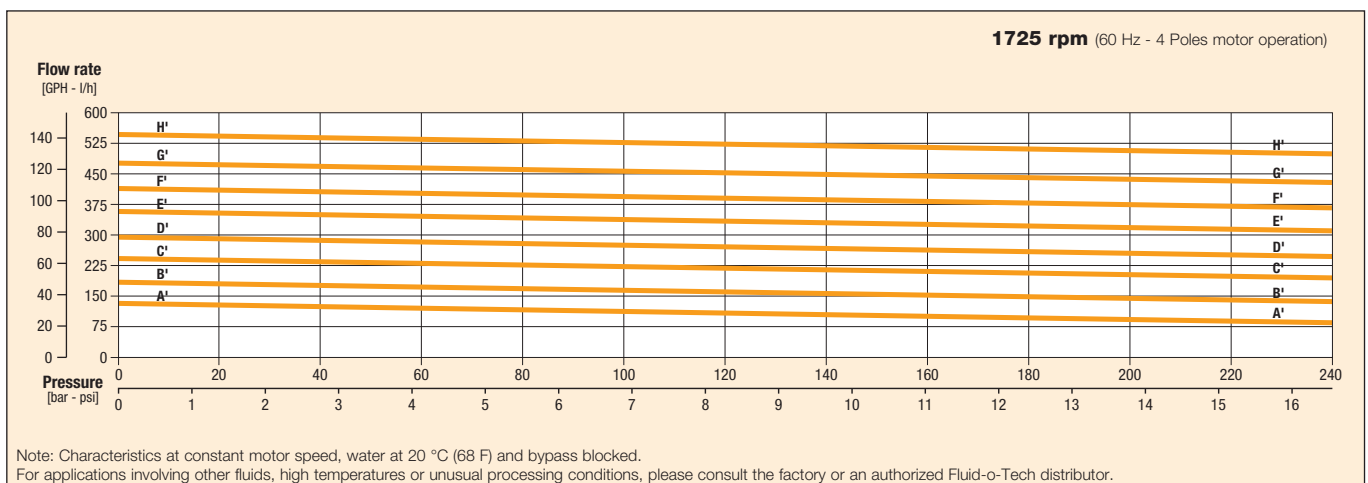
Model	P0/PA/PW/PB	070	071	074	071x	074x	100	101	104	101x	104x	1500	1501	1504	1501x	1504x	200	201	204	201x	204x
Figure				A-A					B-B					C-C					D-D		
Relief valve		NO	STD	BAL	STD	BAL	NO	STD	BAL	STD	BAL	NO	STD	BAL	STD	BAL	NO	STD	BAL	STD	BAL
Strainer		NO	NO	NO	YES	YES	NO	NO	NO	YES	YES	NO	NO	NO	YES	YES	NO	NO	NO	YES	YES

Model	P0/PA/PW/PB	2500	2501	2504	2501x	2504x	300	301	304	301x	304x	3500	3501	3504	3501x	3504x	400	401	404	401x	404x
Figure				E-E					F-F					G-G					H-H		
Relief valve		NO	STD	BAL	STD	BAL	NO	STD	BAL	STD	BAL	NO	STD	BAL	STD	BAL	NO	STD	BAL	STD	BAL
Strainer		NO	NO	NO	YES	YES	NO	NO	NO	YES	YES	NO	NO	NO	YES	YES	NO	NO	NO	YES	YES



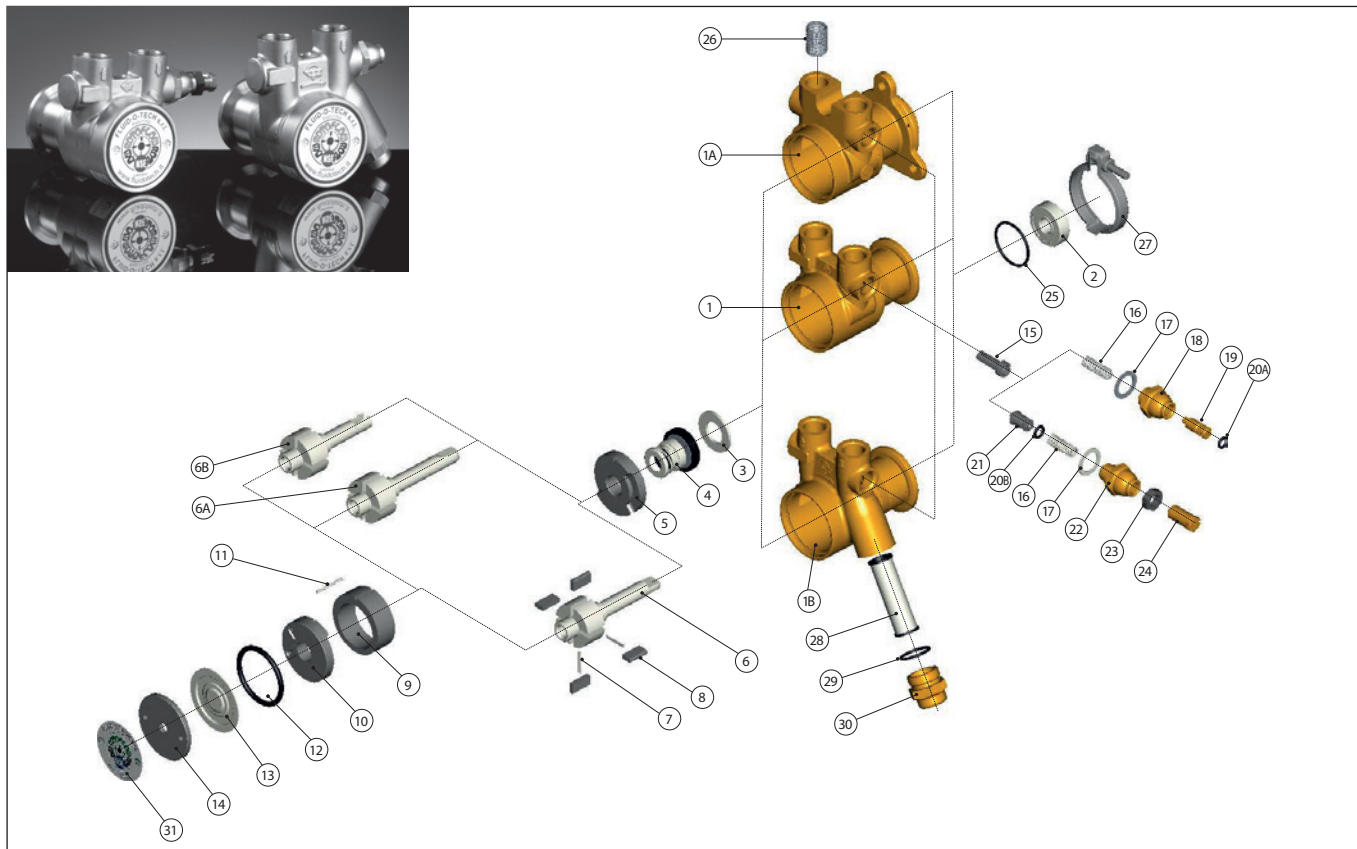
Model	P0/PA/PW/PB	070	071	074	071x	074x	100	101	104	101x	104x	1500	1501	1504	1501x	1504x	200	201	204	201x	204x
Figure				A'-A'					B'-B'					C'-C'					D'-D'		
Relief valve		NO	STD	BAL	STD	BAL	NO	STD	BAL	STD	BAL	NO	STD	BAL	STD	BAL	NO	STD	BAL	STD	BAL
Strainer		NO	NO	NO	YES	YES	NO	NO	NO	YES	YES	NO	NO	NO	YES	YES	NO	NO	NO	YES	YES

Model	P0/PA/PW/PB	2500	2501	2504	2501x	2504x	300	301	304	301x	304x	3500	3501	3504	3501x	3504x	400	401	404	401x	404x
Figure				E'-E'					F'-F'					G'-G'					H'-H'		
Relief valve		NO	STD	BAL	STD	BAL	NO	STD	BAL	STD	BAL	NO	STD	BAL	STD	BAL	NO	STD	BAL	STD	BAL
Strainer		NO	NO	NO	YES	YES	NO	NO	NO	YES	YES	NO	NO	NO	YES	YES	NO	NO	NO	YES	YES



Brass rotary vane pumps

PO 70-400 series



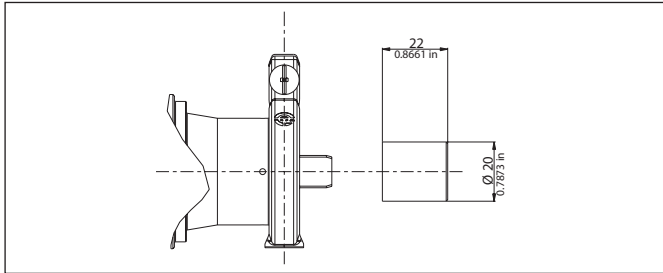
POS	DESCRIPTION	MATERIAL	CODE	NOTES
1	HOUSING	BRASS	22-01-01	NPT PORTS
			22-01-02	GAS PORTS
1A	HOUSING WITH FLANGE	BRASS	22-01-54	NPT PORTS
			22-01-55	GAS PORTS
1B	HOUSING WITH FILTER	BRASS	22-01-08	NPT PORTS
			22-01-09	GAS PORTS
2	BALL BEARING	STEEL	90-22-01	
3	WASHER	S.S.	22113	
4	MECHANICAL SEAL	CERAMIC/NBR	90-40-01	NSF/WRAS
		CERAMIC/VITON®	90-40-03	
		CERAMIC/EPDM	90-40-05	
5	REAR FLANGE	GRAPHITE	22-03-08	
6	I-SHAPED ROTOR	S.S.	22-02-01	
6A	D-SHAPED ROTOR	S.S.	22-02-02	
6B	F-SHAPED ROTOR	S.S.	22-02-11	
7	VANE PIN	S.S.	22-07-02	70-100 l/h
			22-07-03	150 l/h
			22-07-04	200 l/h
			22-07-05	250 l/h
			22-07-06	300 l/h



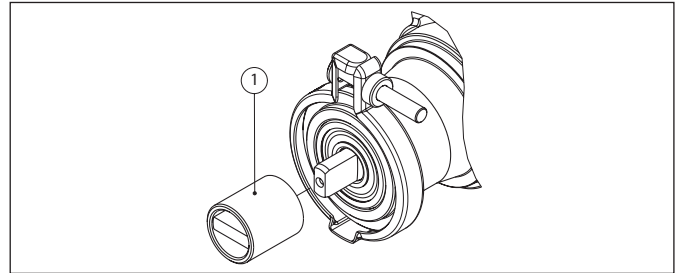
POS	DESCRIPTION	MATERIAL	CODE	NOTES
7	VANE PIN	S.S.	22-07-07	350 l/h
			22-07-08	400 l/h
8	VANE	GRAPHITE	22-04-03	
9	LINER	GRAPHITE	22-05-17	70 l/h
			22-05-18	100 l/h
			22-05-19	150 l/h
			22-05-21	200 l/h
			22-05-23	250 l/h
			22-05-24	300 l/h
			22-05-25	350 l/h
			22-05-27	400 l/h
10	FRONT FLANGE	GRAPHITE	22-03-06	
11	ALIGNMENT PIN	S.S.	22-07-01	
12	O-RING	NBR	90-23-13	NSF/WRAS
		VITON®	90-23-21	
		EPDM	90-23-14	
13	SHAPED DISK	S.S.	22701	
14	THREADED CUP	ALUMINUM	22-08-02	
15	OPEN BYPASS VALVE	BRASS	22307	
		PLASTIC	22-16-13	
	SOLID BYPASS VALVE	BRASS	22-16-02	
		PLASTIC	22-16-18	
16	BYPASS SPRING	S.S.	22505	
17	WASHER	NYLON®	22-12-01	NSF/WRAS
18	STANDARD BYPASS NUT	BRASS	22-20-01	
19	STANDARD BYPASS SCREW	BRASS	22-17-03	
20A	BYPASS SCREW O-RING	NBR	90-23-16	NSF/WRAS
		VITON®	90-23-20	
		EPDM	90-23-24	
20B	BALANCED BYPASS SCREW O-RING	NBR	90-23-138	
		VITON®	90-23-141	
		EPDM	90-23-140	
21	BYPASS PLUNGER	BRASS	22-18-13	
		PLASTIC	22-18-09	
22	BALANCED BYPASS NUT	BRASS	22-20-12	
23	LOCK NUT	PLASTIC	22-20-09	
24	BALANCED BYPASS SCREW	BRASS	22-17-02	
25	BALL BEARING SEAT O-RING	NBR	90-23-26	
26	RETAINER SPRING	S.S.	22023	
27	ASSEMBLED CLAMP	S.S.	94-80-01	
28	MAIN FILTER	S.S./PLASTIC	22-82-03	100 MESH
29	FILTER NUT O-RING	NBR	90-23-03	
		VITON®	90-23-17	
		EPDM	90-23-15	
30	FILTER NUT	BRASS	22-20-03	
31	LABEL		99-01-01	
			99-01-02	NSF



PO/MO SERIES

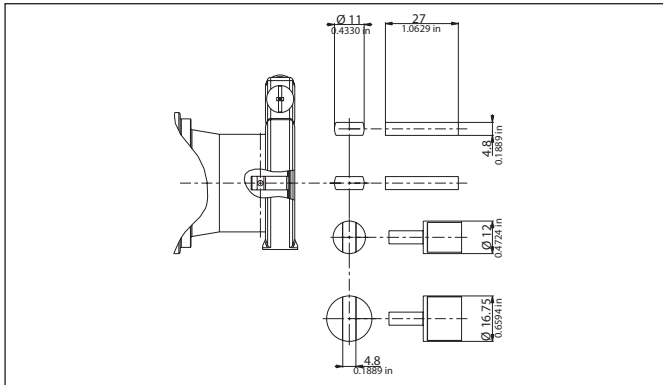


DUMPER COUPLING FOR RPM MOTORS

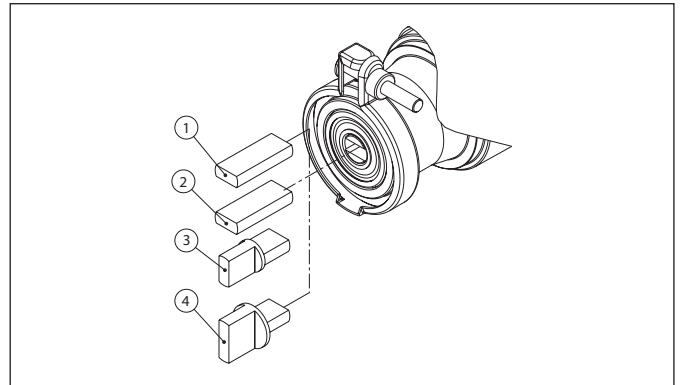


POS	DESCRIPTION	MATERIAL	CODE	QUANTITY
1	COUPLING MALE/FEMALE	PLASTIC	91-03-05	1

PO/MO SERIES

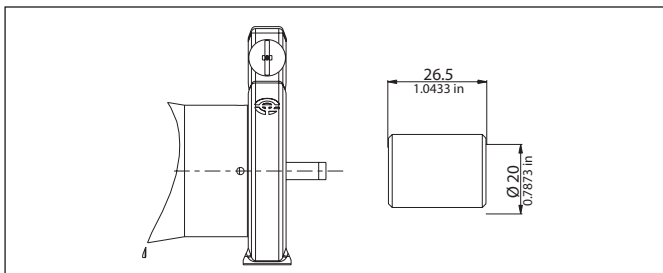


FEMALE SHAFT WITH COUPLING

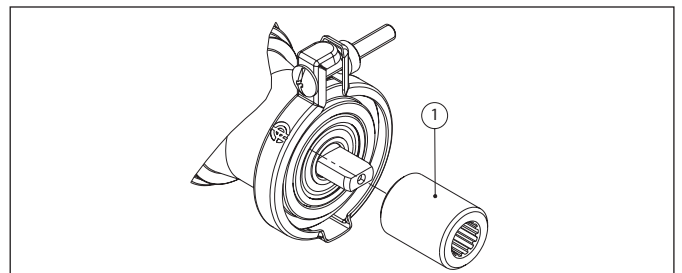


POS	DESCRIPTION	MATERIAL	CODE	QUANTITY
1	FLAT COUPLING	PLASTIC	91-03-01	1
2	FLAT COUPLING	BRASS	91-03-02	1
3	CROSS COUPLING	BRASS	91-03-04	1
4	CROSS COUPLING	BRASS	91-03-03	1

PO SERIES



COUPLING FOR "1" PUMP ROTOR



POS	DESCRIPTION	MATERIAL	CODE	QUANTITY
1	"1" SPLINED COUPLING	PLASTIC	91-03-11	1



Product: ROTARY VANE PUMPS PO SERIES

Fluid-o-Tech S.r.l. declares under its own responsibility that all the rotary vane pumps manufactured comply with the safety requirements for the use they are designed for, provided that the normal operating conditions indicated in the instruction sheet attached to the product are respected.

The product complies with the following Directives:

- Directive 2014/34/EU of the European Parliament and of the Council, of 26th February 2014, related to equipments and protection devices intended to be used in potentially explosive environments - ATEX.
- D.M. 174/04 of the Health Ministry, of 6th April 2004, on materials and devices that may be used in fixed catching, treatment, adduction and distribution installations of water destined for human use.
- EC Regulation n.1935/2004 of the European Parliament and the Council of 27th October 2004 on materials and articles intended to come into contact with food products and for which migration tests are planned with simulant of type A, as required by DM n.338 of 22nd July 1998 Encl.1 Chapter 1.

Groups equipped with motors satisfy the requirements of the following Directives for the member states' legislations approaching:

- Directive 2014/30/ EU of the European Parliament and of the Council, of 26th February 2014, related to the Electromagnetic Compatibility – EMC.
- Directive 2014/35/ EU of the European Parliament and of the Council, of 26th February 2014, related to the electric material intended to be used within specified voltage limits – DBT.
- Directive 2014/34/ EU of the European Parliament and of the Council, of 26th February 2014, related to equipments and protection devices intended to be used in potentially explosive environments - ATEX.
- Directive 2011/65/ EU of the European Parliament and of the Council, of 08 June 2011, and Delegated Directive 2015/863 of the Uropean Commission of 31st March 2015, on the restriction of the use of certain hazardous substances in electrical and electronic equipment – RoHS

Fluid-o-Tech S.r.l. has referred to the harmonized regulations applicable to the product which the same Directives refer to.

It is necessary to clarify that for the Directive 2014/34/EU relevant to the potentially explosive environments, the product complies with such Directive for applications in environments with characteristics **EEx II 3 G2 D22**, provided that the normal operating conditions indicated in the instruction sheet are respected.

It is understood that the motor to which the pump is coupled needs to be complying with the same requirements.

Fluid-o-Tech S.r.l.
Via Leonardo da Vinci, 40
20094 Corsico (MI), Italy
Tel. +39 02 999501
Fax +39 02 99950999

THE PRESIDENT OF THE BOARD
(VITTORIO ANDREIS)

FLUID-O TECH SRL
PRESIDENTE DEL CONSIGLIO
D'AMMINISTRAZIONE





CERTIFICATION MARK

This certifies that

FLUID-O-TECH

*has had the undermentioned product examined, tested and found,
when correctly installed, to comply with the requirements of the
United Kingdom Water Supply (Water Fittings) Regulations and
Scottish Water Byelaws.*



20, 22, 24, 26, 28, 31, 32, 33 & 34 SERIES OF PUMPS

*The certificate by itself is not evidence of a valid WRAS Approval. Confirmation of the current
status of an approval must be obtained from the WRAS Directory (www.wras.co.uk/directory)*

The product so mentioned will be valid until the end of:

September 2020

1509062

Certificate No.

Secretary

Chairman, Product Assessment Group



NSF International

RECOGNIZES

FLUID O TECH S.R.L.

Facility: CORSICO, MILANO, ITALY

AS COMPLYING WITH NSF/ANSI 169.

PRODUCTS APPEARING IN THE NSF OFFICIAL LISTING ARE
AUTHORIZED TO BEAR THE NSF MARK.



ANSI Accredited Program
PRODUCT CERTIFICATION
Certification Program
Accredited by the
American National
Standards Institute



Certification Program
Accredited by the
Standards Council
of Canada

www.goharab.com

info@goharab.com

• ۲۱ - ۷۷۱۱۰۷۶۳

• ۲۱ - ۸۹۷۸۸۶۶۷

تلفن:

فکس:



گوه‌ر آب

دانشی بروز - ایده ای بروز